

The Dhaka By-Pass Road

Key Information

Length:

Approx. 50km

Location:

Existing N105, East of Dhaka,
Joydevpur to Madanpur

Traffic:

19,000 AADT (2020 projection)
>70% commercial mix

Interchanges:

Triggered by future consideration

Owner:

Roads and Highways Department,
MRTB, GoB

Timeline:

RFQ issue : 2014

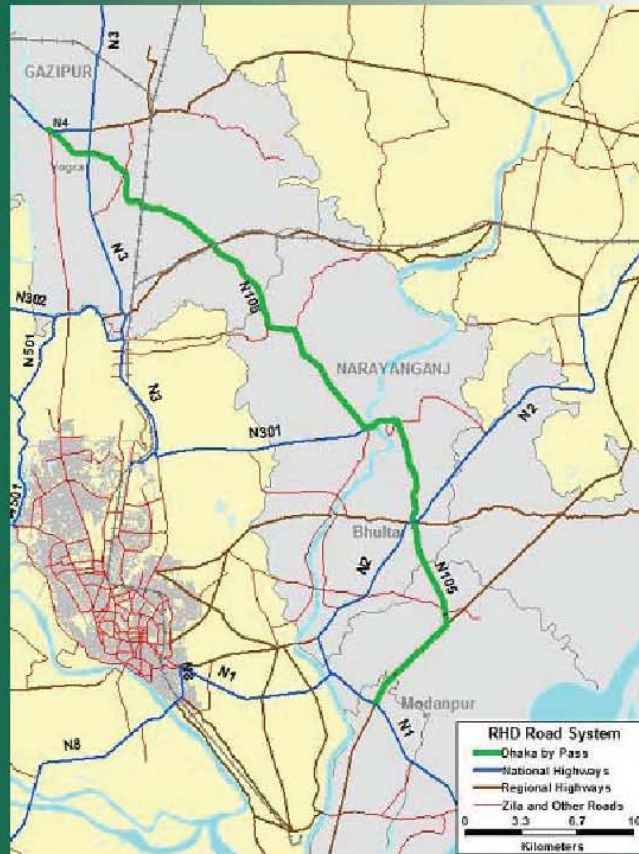
RFP issue : 2015

Financial Close : 2016

Construction : 2017/9

Concession:

~25 years (in the order of)



Public Private
Partnership
Office



The Dhaka By-Pass Road



CONTACT US



Public Private Partnership Office

Prime Minister's Office

AIMS Tower (Level-13)

51-52 Mohakhali,

Dhaka-1212, Bangladesh

Tel: +88 02 9898530

Fax: +88 02 9898511

E-mail: ceo@pppo.gov.bd

Web: www.pppo.gov.bd

SPONSOR



Roads and Highways Department

Ministry of Road Transport and Bridges

Government of Bangladesh

Sarak Bhaban, Tejgaon

Dhaka-1208, Bangladesh

Web: www.rhd.gov.bd

CONSULTANT



MMM GROUP

MMM Group Canada

Background

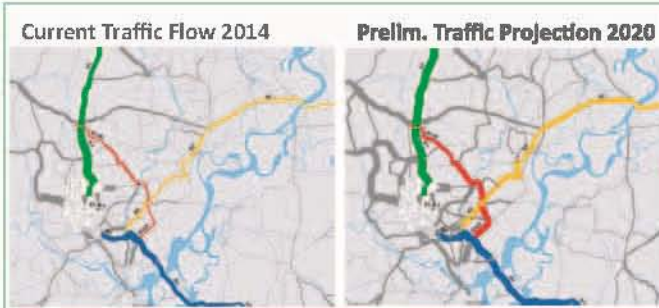
The Government of Bangladesh aims to triple its Gross National Income (GNI) per capita to US\$2,000 by 2021. To achieve this level of income, the GDP growth has been planned to increase from the last few years' average of 6% to the double digits by the year 2021. Building physical infrastructure (e.g. roads) is a major factor to the successful achievement of the country's targeted economic growth.

In response to government priorities, the Roads and Highways Department (RHD), with the support of the Public-Private Partnerships (PPP) Office, is currently planning and designing the four-laning of the Joydevpur-Debogam-Bhulta-Madanpur (N105) Road, colloquially known as the Dhaka By-Pass Road. In addition to commercial through-traffic, large-scale developments surrounding the by-pass road are expected to generate an increase in local traffic as well. This by-pass road is expected to alleviate a major bottleneck in transport and open new areas to economic and industrial development with the aim of spurring economic growth.

Current and Projected Traffic Data

2014 Traffic Count:
~13,000 AADT

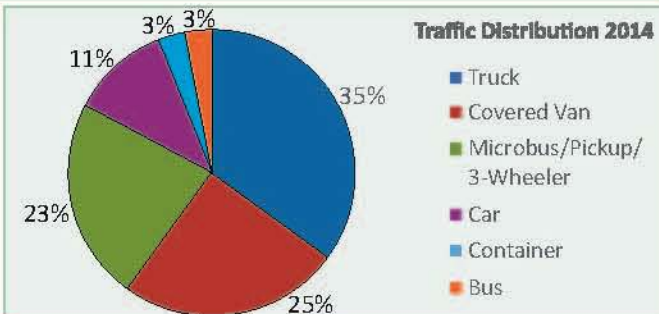
2020 Opening Year Traffic
Count Projection:
~19,000 AADT



Traffic Distribution

As at 2014, >70% of AADT is commercial in nature, consisting mostly of medium to large trucks and containers.

Trucks represent over one third of all traffic.



The Dhaka By-Pass (N-105) Today



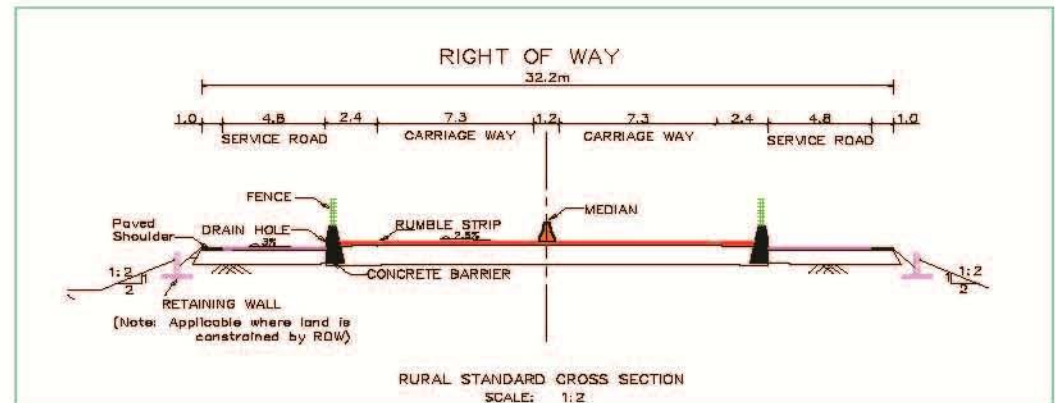
Project Information

Approximately 50 km of Highway

The project involves the four-laning of approximately 50 km of road. It connects National Highways N4 (in the north) to the N1 (in the south), traversing the N2 and N3, numerous regional highways and zilla roads. The road will provide for a major arterial connection between the industrial zones of North and North East with the port connection to Chittagong in the South.

Access Controlled Toll-Road

The Dhaka By-Pass Road is contemplated to include a four lane, controlled access toll road, plus a two-lane service road.



A Public-Private Partnership (PPP)

The Dhaka By-Pass Road is one of the RHD's major roadways being delivered via an alternative delivery model, Public-Private Partnership (PPP) or Build-Operate-Transfer (BOT) model.

The PPP arrangement for this project involves Design-Build-Finance-Operate-Maintain (DBFOM) of the controlled access-toll highway.

The service road is contemplated to be executed as Design-Build-Finance, but operations and maintenance will be executed by RHD.

Past economic figures and forecasts leading up to 2020 indicate a robust economic growth plan that would provide a very supportive environment for implementing a PPP program.